



**European
Investment
Bank**

The EU bank

A circular arrangement of twelve blue stars, representing the European Union flag, positioned to the right of the text 'The EU bank'.

***Financing Digital Innovation
in Public Safety Communications***

PSCE Conference - Paris 2019

Pierre-Alain FRANCOIS p.francois@eib.org

The EIB: the EU bank

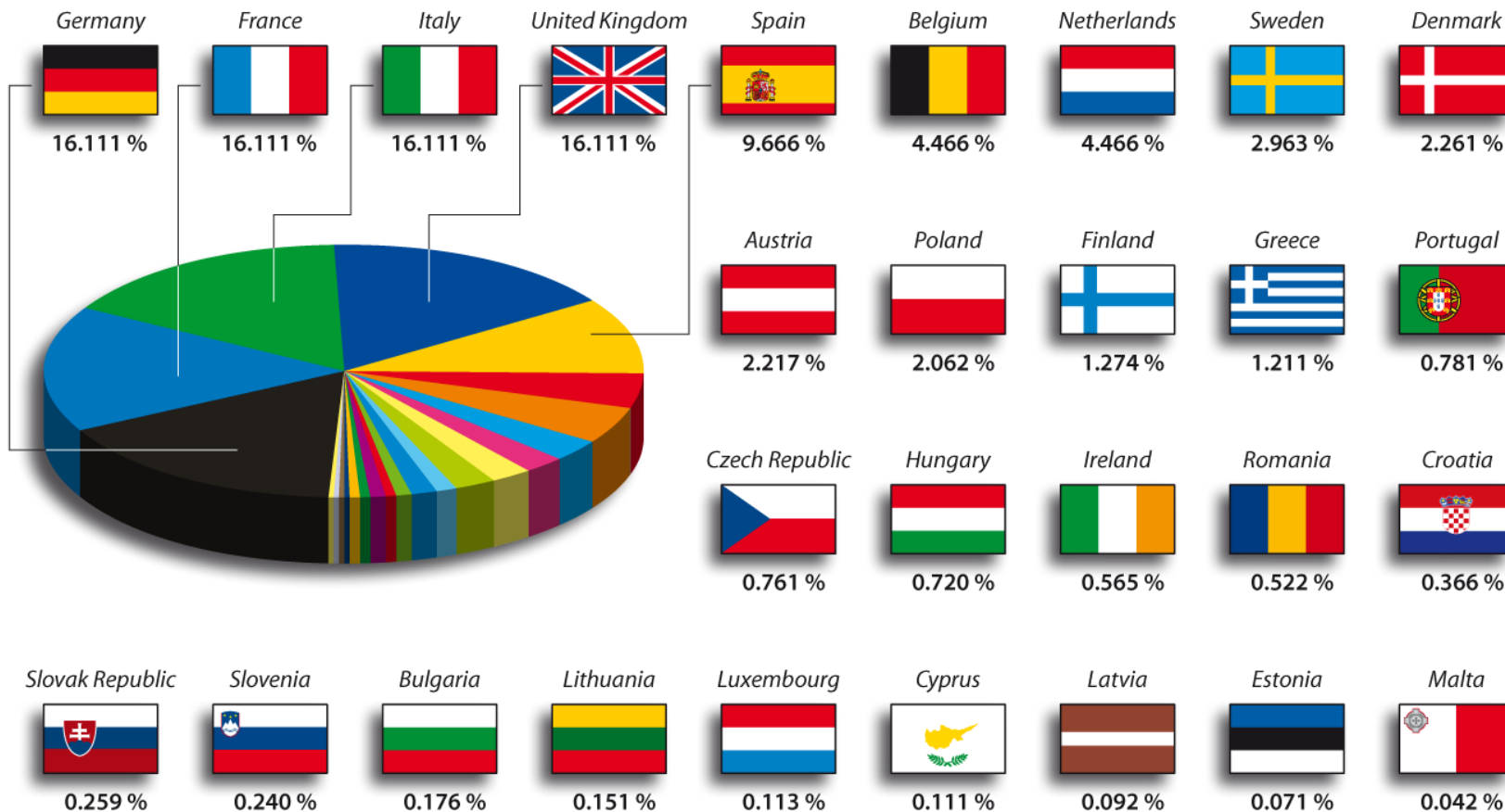
- In 60 years, over € 1.2tn invested
- More than 12 000 projects in over 160 countries
- Headquartered in Luxembourg with around 3 400 staff and 50 offices WW
- We raise our funds on the international capital markets
- **We pass on favorable borrowing conditions to clients**

- ▶ The world's largest multilateral lender and the biggest provider of climate finance.
- ▶ Around 90% of lending is within the EU
- ▶ Governed by the EU Member States

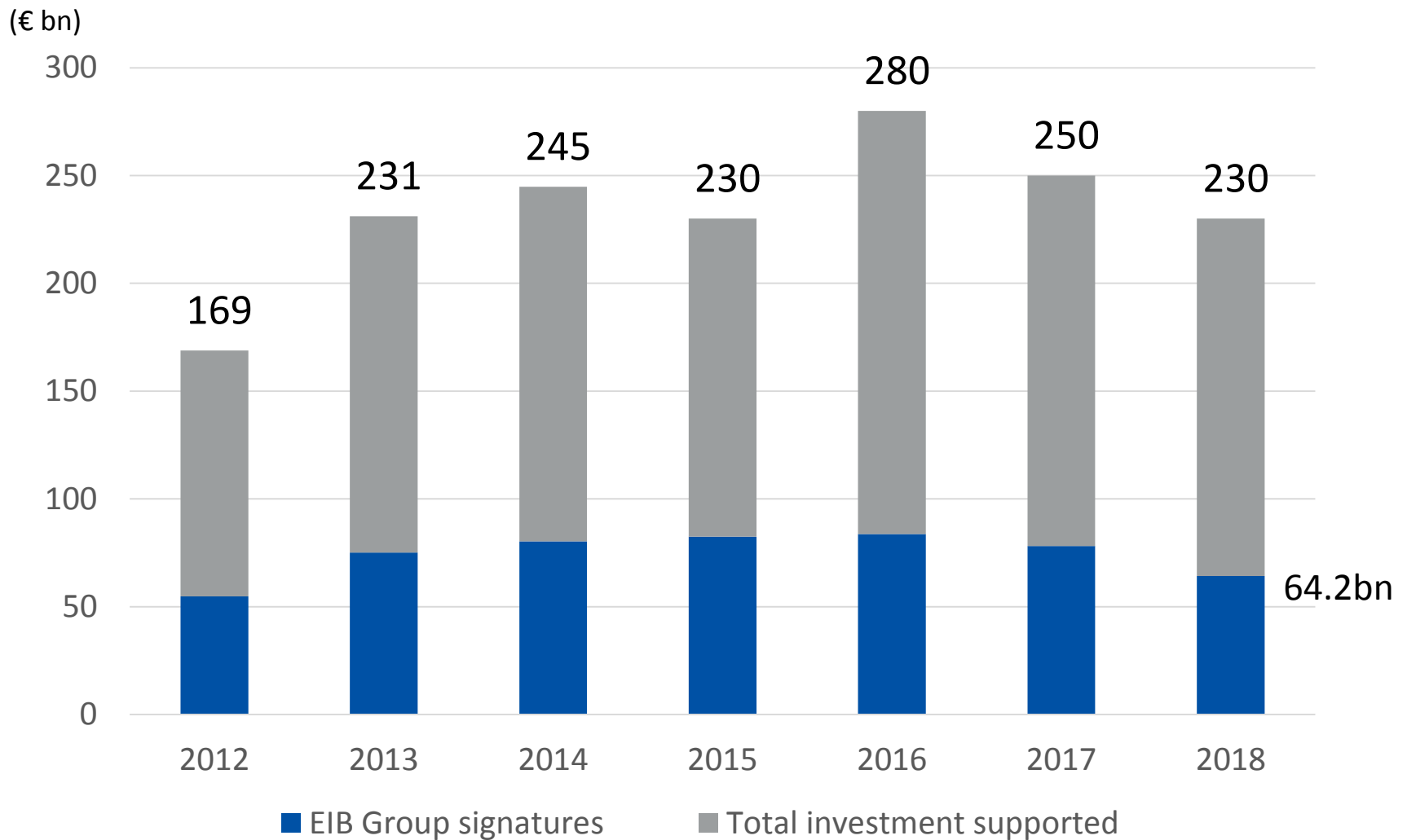
**Improving the
quality of life for
people in Europe
and beyond**

The EIB: capital breakdown

As at 31 December 2018



EIB Group-supported investment



* Change of methodology after 2014

EIB Group financing was 64.2bn in 2018

Innovation



€ **13.5bn**

Environment



€ **15.2bn**

Infrastructure



€ **12.3bn**

SMEs



€ **23.3bn**

374.000 SMEs and Mid Caps

854 projects signed

We deliver **impact** where it is needed

2018



JOBS

5 million jobs sustained in small businesses



HEALTH

27.3 million people with access to improved health services



WATER

20 million people benefiting from safer drinking water



TRANSPORT

290 million additional passengers



ENERGY

34.3 million households powered by EIB projects



DIGITAL

29 million people with new or upgraded high-speed digital connections

2018

€ 16.1 billion
Climate action investments

Climate change adaptation

€ 1.2 bn

Renewable energy

€ 4.1 bn

Research, development and innovation

€ 1.1 bn

Energy efficiency

€ 2.7 bn

Lower carbon transport

€ 6.0 bn

Other climate change mitigation

€ 1.1 bn

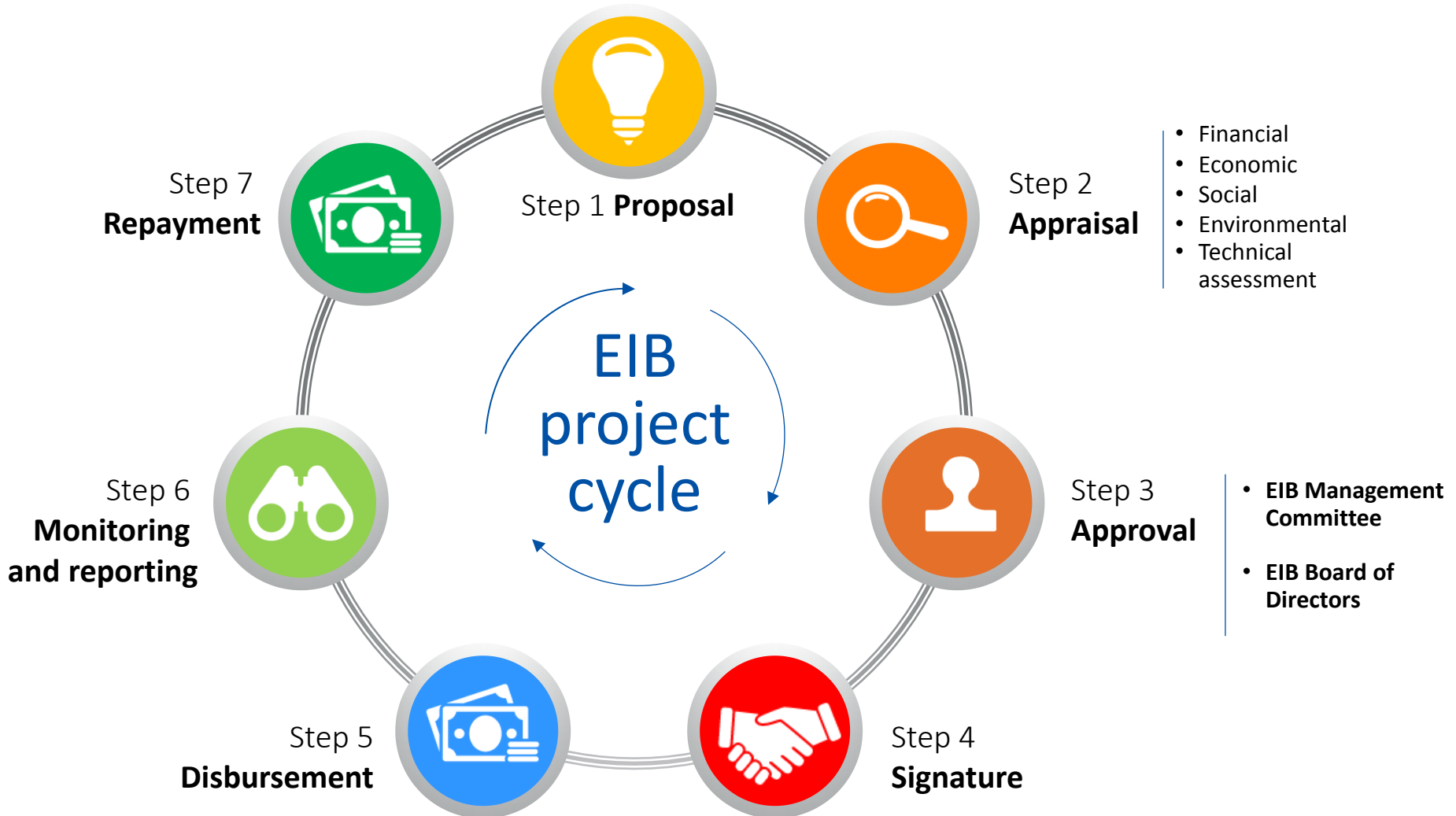
EIB products help catalyse investment

While each of our transactions is tailor-made to meet the needs of the project, our products are generally classified into loans, guarantees, equity investments and advisory services. These can be combined, or 'blended' with other sources of public financing.



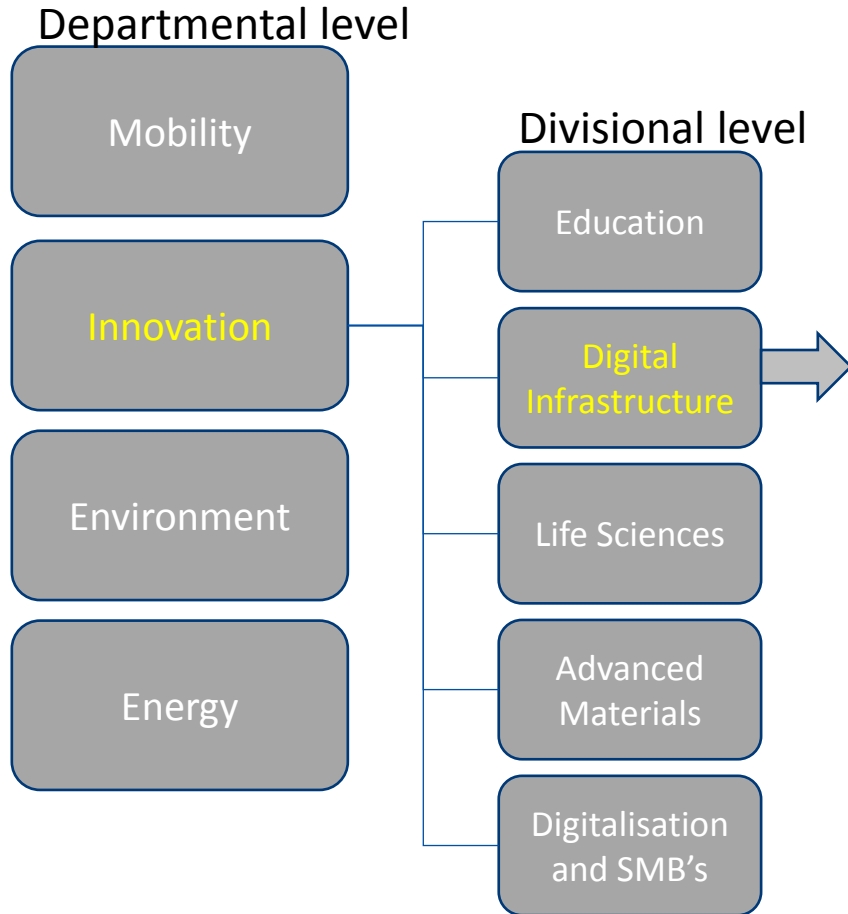
EIB project cycle

We support sound and sustainable projects



FINANCING DIGITAL INNOVATION

EIB Projects Directorate



- Mobile Networks
- Fixed Networks
- Data Centres
- Cybersecurity
- Telecom Suppliers
- Satellites
- Postal services
- Semiconductors

in accordance with EU Directives, such as:

- Digital Agenda for Europe
- Gigabit Society
- European Electronic Communication Code (EECC)

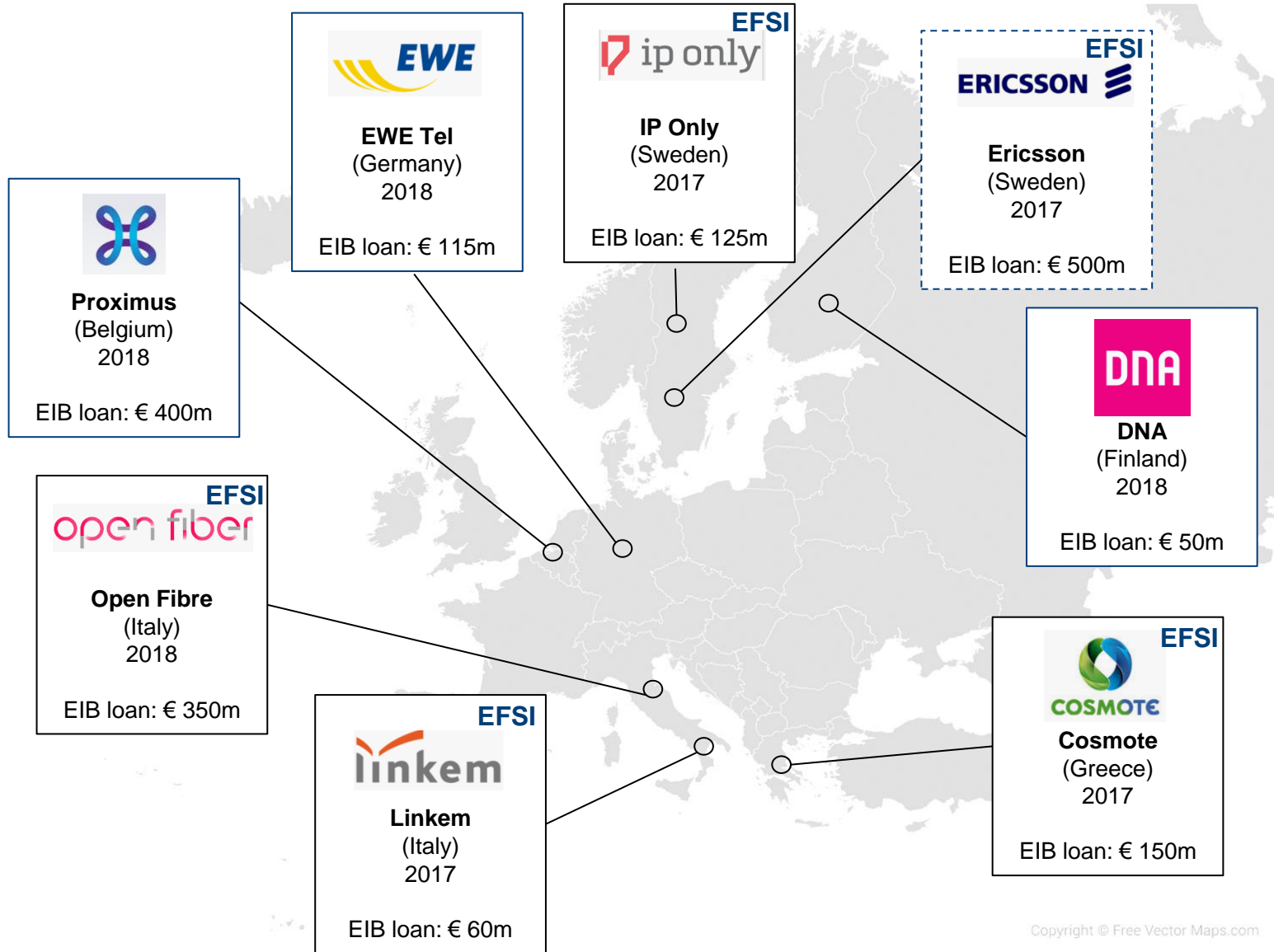
Innovation Department - Digital Infrastructure Division

- ▶ We finance Project costs (CAPEX):
 - Construction works
 - Hardware & Equipment
 - Software & Licenses
 - Other implementation costs

- ▶ We finance OPEX only in case of:
 - R&D activities
 - Cybersecurity enhancements

- ▶ We don't finance:
 - Land acquisition
 - M&A

Examples of broadband lending





ILIAD FRANCE TRES HAUT DEBIT EUR 200m



TECHNICOLOR RDI EUR 90m



GRAND EST TRES HAUT DEBIT EUR 300m



HERAULT TRES HAUT DEBIT EUR 60m



GIRONDE TRES HAUT DÉBIT EUR 185m



MAINE ET LOIRE TRES HAUT DEBIT EUR 115m



CHARENTE MARITIME TRES HAUT DEBIT EUR 95m



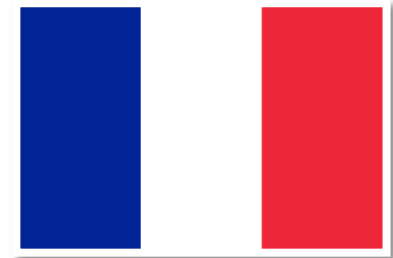
VAR TRES HAUT DEBIT EUR 80m



AISNE PROGRAMME TRES HAUT DEBIT EUR 60m



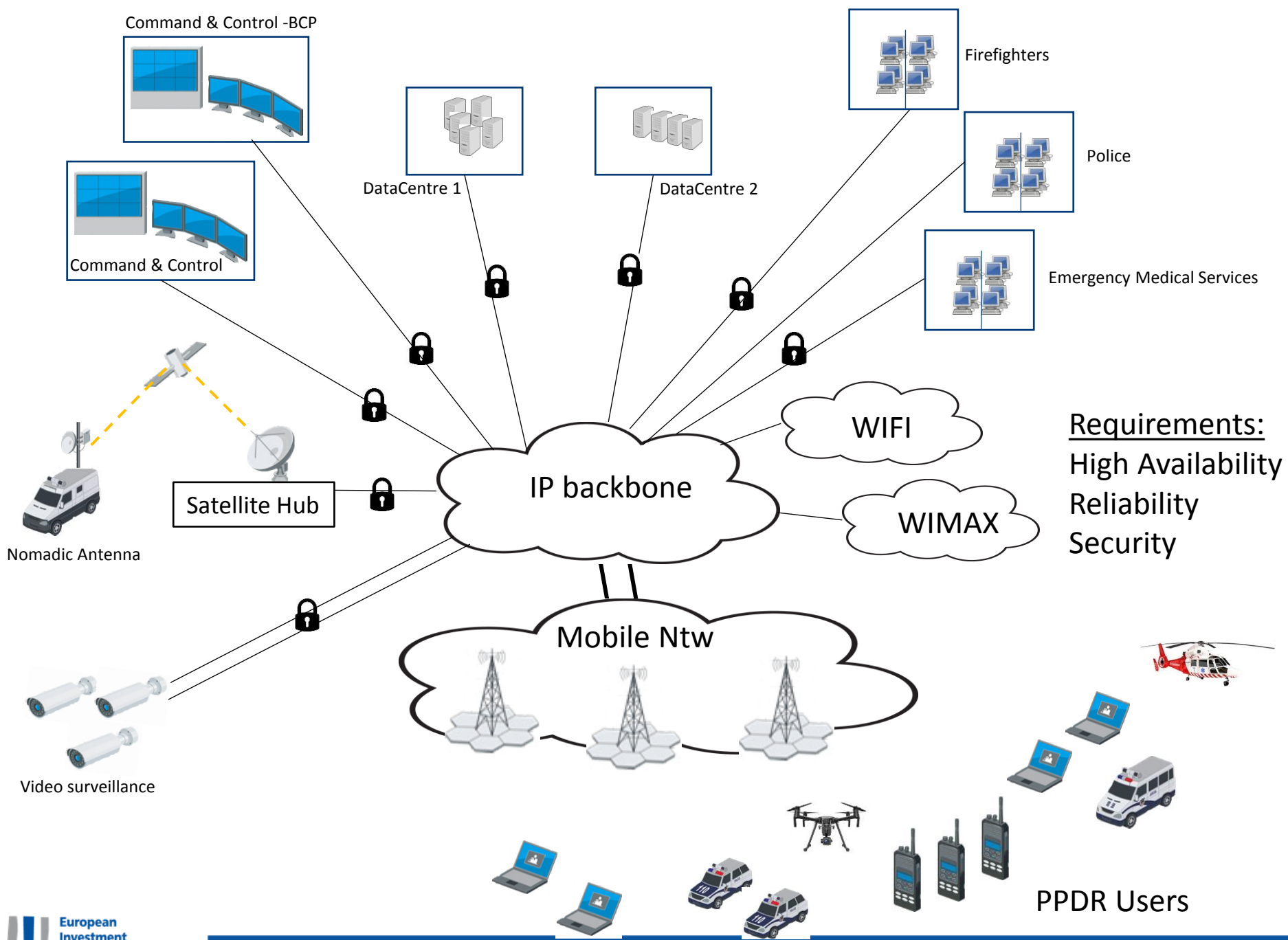
MOSELLE PROGRAMME TRES HAUT DÉBIT EUR 60m



FRANCE

Public Protection & Disaster Relief Networks





PPDR Networks in EU

TETRAPOL / TETRA Deployments



Spending's in EU from the late 90's to 2015: EUR 19 bn

The market is valued worldwide (Sw & Hw):

From USD 13 bn in 2017 to USD 20 bn by 2023 (CAGR of 8.1%)

This growth is driven by:

- 1) growing DATA traffic
- 2) need for modernization and replacement of old equipment

Conclusion

The EIB is keen in supporting
your PPDR project !

Thank you!

More information at: www.eib.org
info@eib.org

Tel.: +352 4379-22000

or

Pierre-Alain FRANCOIS

Projects Directorate - Digital Infrastructure

p.francois@eib.org

+352 4379-83292